

Recombinant Epidermal Growth Factor Receptor (EGFR)**Organism Species: Homo sapiens (Human)*****Instruction manual***

FOR IN VITRO USE AND RESEARCH USE ONLY

NOT FOR USE IN CLINICAL DIAGNOSTIC PROCEDURES

12th Edition (Revised in Aug, 2016)

[PROPERTIES]**Source:** Prokaryotic expression.**Host:** *E. coli***Residues:** His888~Ala1210**Tags:** N-terminal His-Tag**Tissue Specificity:** Liver.**Subcellular Location:** Cell membrane; Single-pass type I membrane protein.**Purity:** >85%**Traits:** Freeze-dried powder**Buffer formulation:** 20mM Tris, 150mM NaCl, pH8.0, containing 1mM EDTA, 1mM

DTT, 0.01% sarcosyl, 5%Trehalose and Proclin300.

Original Concentration: 200ug/mL**Applications:** SDS-PAGE; WB; ELISA; IP; CoIP; Purification; Amine Reactive

Labeling.

(May be suitable for use in other assays to be determined by the end user.)

Predicted isoelectric point: 5.2**Predicted Molecular Mass:** 39.9kDa**Accurate Molecular Mass:** 44kDa as determined by SDS-PAGE reducing conditions.**Phenomenon explanation:**

The possible reasons that the actual band size differs from the predicted are as follows:

1. Splice variants: Alternative splicing may create different sized proteins from the same gene.
2. Relative charge: The composition of amino acids may affects the charge of the protein.
3. Post-translational modification: Phosphorylation, glycosylation, methylation etc.
4. Post-translation cleavage: Many proteins are synthesized as pro-proteins, and then cleaved to give the active form.
5. Polymerization of the target protein: Dimerization, multimerization etc.

[USAGE]

Reconstitute in 20mM Tris, 150mM NaCl (pH8.0) to a concentration of 0.1-1.0 mg/mL. Do not vortex.

[STORAGE AND STABILITY]

Storage: Avoid repeated freeze/thaw cycles. Store at 2-8°C for one month.

Aliquot and store at -80°C for 12 months.

Stability Test: The thermal stability is described by the loss rate. The loss rate was determined by accelerated thermal degradation test, that is, incubate the protein at 37°C for 48h, and no obvious degradation and precipitation were observed. The loss rate is less than 5% within the expiration date under appropriate storage condition.

[SEQUENCE]

```

HRI YTHQSDVWSY
GVTWELMTF GSKPYDGIPA SEISSILEKG ERLPQPPICT IDVYMIMVKC
WMIDADSRPK FRELIIEFSK MARDPQRYLV IQGDERMHLP SPTDSNFYRA
LMDEEDMDDV VDADEYLIPQ QGFFSSPSTS RTPLLSSLSA TSNNSTVACI
DRNGLQSCPI KEDSFLQRY S DPTGALTED SIDDTFLPVP EYINQSVPKR
PAGSVQNPVY HNQPLNPAPS RDPHYQDPHS TAVGNPEYLN TVQPTCVNST
FDSPAHWAK GSHQISLDNP DYQQDFFPKE AKPNGIFKGS TAENAEYLRV
APQSSEFIGA

```

[IDENTIFICATION]

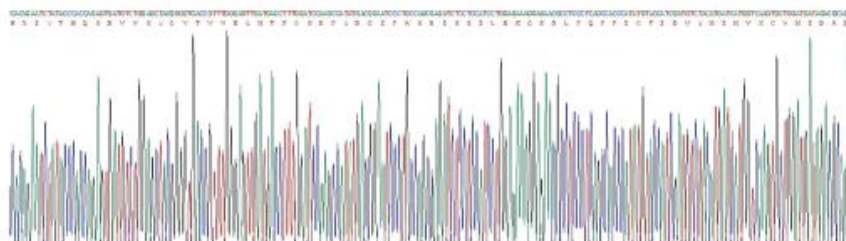


Figure 1. Gene Sequencing (Extract)

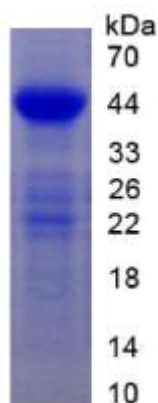


Figure 2. SDS-PAGE