

FOR IN VITRO USE AND RESEARCH USE ONLY

NOT FOR USE IN CLINICAL DIAGNOSTIC PROCEDURES

---

---

## [ PROPERTIES ]

### [ PROPERTIES ]

**Source:** Polyclonal antibody preparation

**Host:** Rabbit

**Purification:** Antigen-specific Affinity Chromatography.

**Traits:** Liquid

**Concentration:** 200µg/mL

**UOM:** 100µg

**Applications:** WB; IHC; ICC; IP.

### [ IMMUNOGEN ]

Immunogen: Recombinant Pepsin (Val63~Ser295) and (Val61~Ala388) expressed in E.coli.

### [ APPLICATIONS ]

**Western blotting:** 0.5-2µg/mL

**Immunohistochemistry:** 5-20µg/mL

**Immunocytochemistry:** 5-20µg/mL

Optimal working dilutions must be determined by end user.

### [ FORMULATION ]

**Form & Buffer:** Supplied as solution form in 0.01M PBS, pH7.4,



containing 0.05% Proclin-300, 50% glycerol.

## [ STORAGE AND STABILITY ]

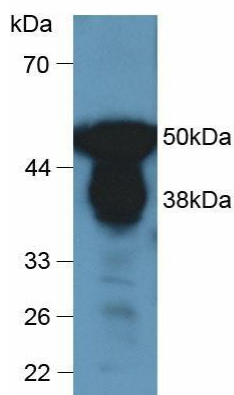
**Storage:** Avoid repeated freeze/thaw cycles.

Store at 4°C for frequent use.

Aliquot and store at -20°C for 12 months.

**Stability Test:** The thermal stability is described by the loss rate. The loss rate was determined by accelerated thermal degradation test, that is, incubate the protein at 37°C for 48h, and no obvious degradation and precipitation were observed. The loss rate is less than 5% within the expiration date under appropriate storage condition.

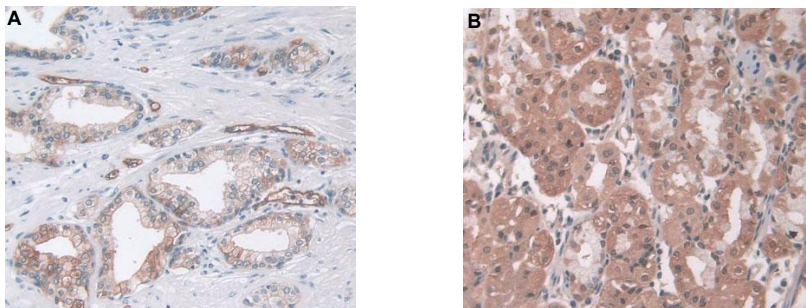
## [ IDENTIFICATION ]



## Figure 1. Western Blot

Human Urine

Primary Ab: 1µg/mL Rabbit Anti-Human PP Ab Second Ab: 1:2000 Dilution of HRP-Linked Guinea pig Anti-Rabbit Ab



## Figure 2. DAB staining on IHC-P

Samples:

1. Human Prostate Gland Tissue
2. Human Stomach Tissue

